



# *Emergency Communications Basic*

*101 Rev 2.0*

## INTRODUCTION TO **EMERGENCY** COMMUNICATIONS FOR HAM RADIO NORFOLK



## Norfolk-ARES.org

Norfolk Amateur Radio Emergency Service (ARES)  
Norfolk HAM Radio Emergency Response System (HAMERS)

Richard Davis, W4NMH [ec@norfolk-ares.org](mailto:ec@norfolk-ares.org)

Emergency Coordinator (EC)

EOC Tactical Repeater: 444.475 MHz (+5 MHz input, PL 127.3) (Wx Alert)

Norfolk VHF Repeater: 145.330 MHz (-600 input, PL 131.8) Primary (Wx Alert)

Norfolk UHF Repeater: 442.950 MHz (+5 MHz input, PL 131.8) Primary (Wx Alert)

Norfolk VHF Repeater: 147.375 MHz (+600 input, PL 131.8) Tactical (Wx Alert)

[aresva.org/aresva/skywarn.html](http://aresva.org/aresva/skywarn.html)

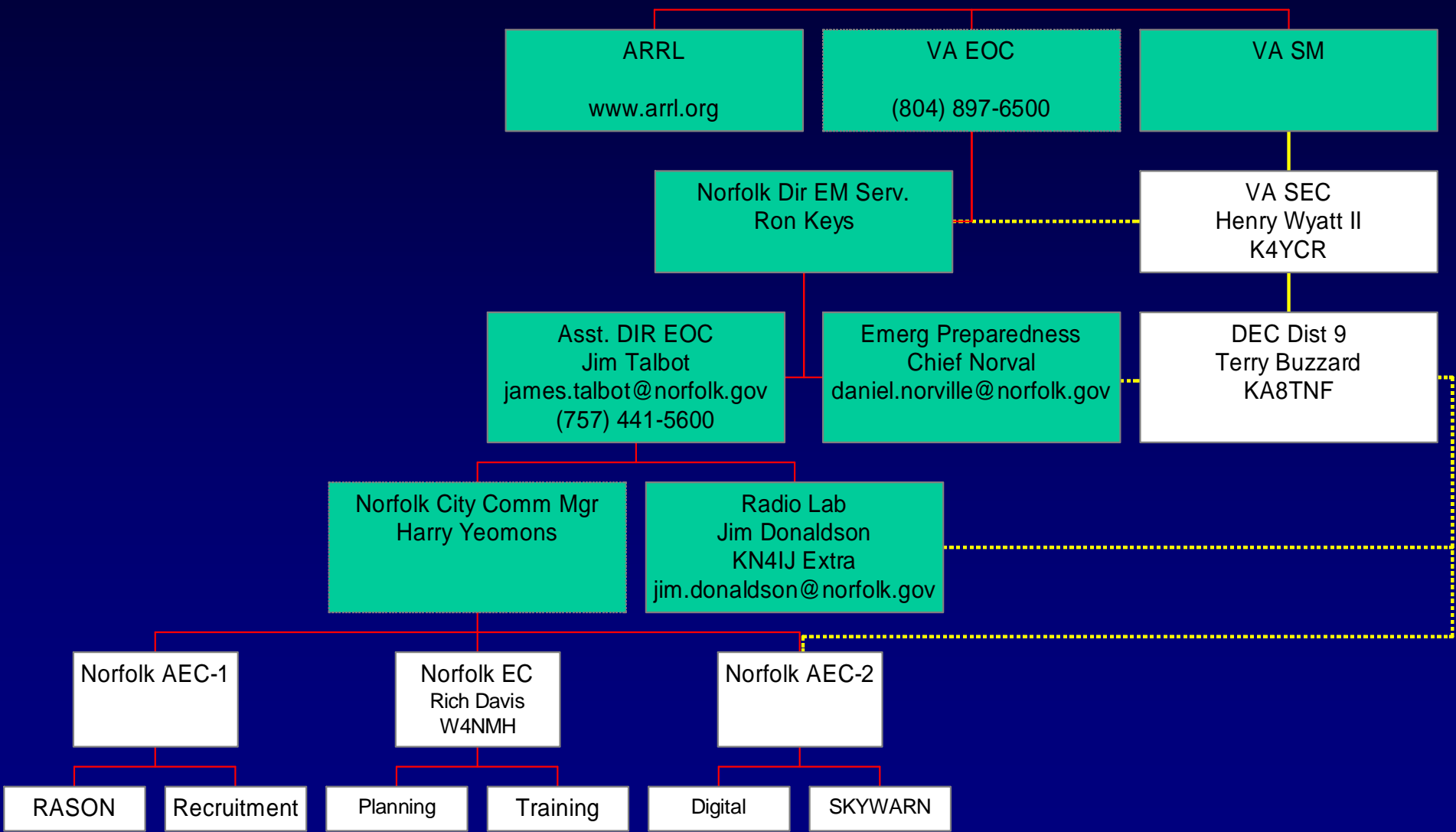
<http://navymars.org>

<http://www.RASONVA.com>



# NORFOLK ARES ORGANIZATION

Rev. 4.0



# EMERGENCY COMMUNICATIONS

◆ What are some of the Emergencies?

# EMERGENCY COMMUNICATIONS

- ◆ What are some of the Emergencies?
- ◆ Airplane Crash, Train Crash, Industrial Accident
- ◆ Earthquakes, Fires
- ◆ Weather Related: Heat Wave (Drought), Thunderstorms, Tornados, Hurricanes, Winter Storms, Floods, Power Outages

# ARES OPERATIONS

## ◆ HAM RADIO OPERATORS

- Are NOT First Responders
- Must be Dispatched for a Tasking
- Must be able to work with  
Volunteers and Career Personnel

# ARES OPERATIONS

- ◆ In what phases of an operation will HAM Radio play a role?

# OPERATIONS ROLES

- ◆ Planning / Training
- ◆ Practice
  - Operate during Public Service Events
  - Participate in Local Area NETS
- ◆ Standby
  - Weather Spotter Activation
  - Other possible activations
- ◆ Activation: Receive Tasking

# OPERATIONS ROLES

## ◆ Recovery

- Damage Assessment: Reporting
- Search & Rescue: Resource Acquisition
- Aid Distribution Networks
  - ☞ Food, Water, Information Dissemination
- Restoration
  - ☞ Provide Communications for a variety of restoration operations
  - ☞ Health and Welfare Message Traffic

# WHAT SHOULD WE DO?

# WHAT SHOULD WE DO?

- ◆ Check that your family is safe and Secure
- ◆ Check that your property is safe and secure
- ◆ Follow the instructions of ARES leadership

## •INITIAL Actions

- ◆ Be prepared to operate. Check equipment operation.
- ◆ Check-in and deploy with Jump-Kit.
- ◆ Obtain Tactical Call sign (ID at end and every 10 Min.)
- ◆ Initiate log (Personal Log and Radio Log)
- ◆ Utilize log FORM to record Formal Messages Handled
- ◆ Monitor assigned frequency AT ALL TIMES.
- ◆ Notify Net Control if you have to leave. [BREAKS]

# OPERATING TIPS

- ◆ Use minimum power on a gain antenna; conserves batteries.
- ◆ “PAUSE” between exchanges
- ◆ Use “BREAK TAGS”
- ◆ Monitor/Listen much, transmit little
- ◆ Think before you talk: Stick to the Pertinent Facts
- ◆ Articulate, don’t slur. Use phonetics.
- ◆ Relay for weak stations
- ◆ DO NOT spread rumors: transmissions to be authenticated
- ◆ Strive for efficiency and accuracy
- ◆ Use all primary means of communications before relying on HAM
- ◆ DO NOT “Broadcast”, creates a disaster within a disaster

# WHAT TO BRING?

# WHAT TO BRING?

- ◆ ARES Identification Card, Driver's License, FCC License, Access Cards
- ◆ Radio: one mobile & one HT; Duel Band 2M/440
- ◆ Radio Accessories: Microphones, Earphone/ Headset, Connectors
- ◆ Antenna: (HT-Better than stock) Mobile Magnetic Mount, or ¼ Wave
- ◆ Power Supply, Portable Power Pack, Battery Charger, Multi-Strip
- ◆ Radio Operating Manual
- ◆ Extra Coax (50 FT)
- ◆ Pen / Pencil, Clipboard, Message Forms, Log Book, Note Paper
- ◆ Net Directory (Communications Plan)
- ◆ Wrist Watch, a book or game to occupy inactive time
- ◆ Snacks, Liquid Refreshments, Personal Medication, Extra Cloths
- ◆ Extra pair of Prescription Glasses, Sunglasses
- ◆ Electrical Tape, Duct Tape, Spare Fuses, SWR Meter
- ◆ Cellular Telephone and Charger (Home / Car)
- ◆ Important Telephone Numbers

# WHAT TO BRING? MORE

- ◆ Additional Radios (Example FRS, CB)
- ◆ Foul Weather Gear
- ◆ Three-day Supply of Drinking Water
- ◆ Cooler with Three-day Supply of Food
- ◆ Mess Kit and Cleaning Supplies, First-Aid Kit, Tent, Sleeping Bag, Chair
- ◆ Toilet Articles, Alarm Clock, Flashlight / spare batteries
- ◆ Portable Lighting, Maps
- ◆ Water proof Matches (Lighter)
- ◆ Toolbox
- ◆ Soldering Iron, Volt-Ohm Meter,
- ◆ Hatchet / ax, Saw, Pick, Shovel, Siphon
- ◆ Jumper Cables
- ◆ 3/8 Inch Rope, Highway Flares, Extra Oil and Gasoline
- ◆ Three-day change of cloths
- ◆ Safety Glasses, Helmet

# SUMMARY & REVIEW

# SUMMARY & REVIEW

- ◆ Introduction to Emergency Communications
- ◆ Norfolk ARES Organization
- ◆ Types of Emergencies
- ◆ Operational Roles
- ◆ Initial Actions
- ◆ Operating Tips
- ◆ What to Bring

QUESTIONS?